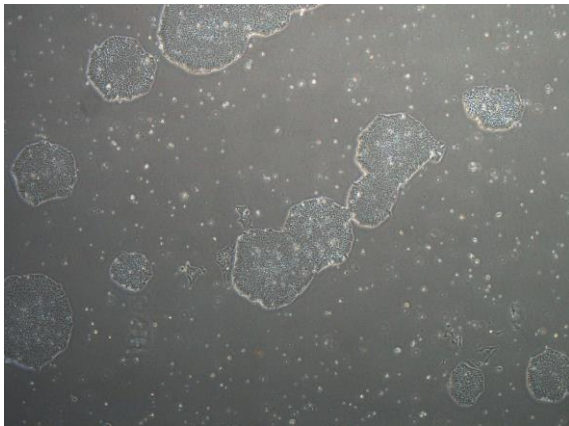
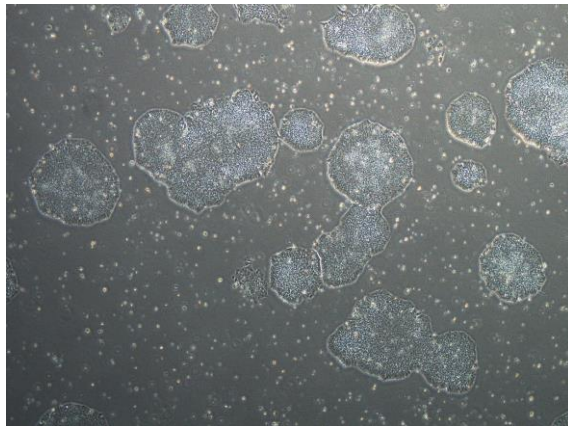


## 【 CiRA-j-1126 】 Morphology of iPSC colonies

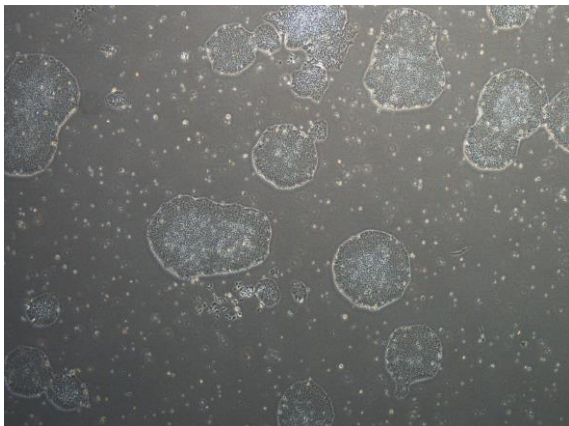
CiRA-j-1126-A: passage-3



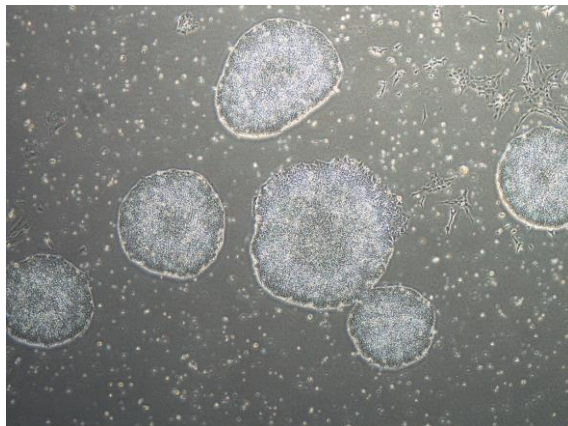
CiRA-j-1126-B: passage-3



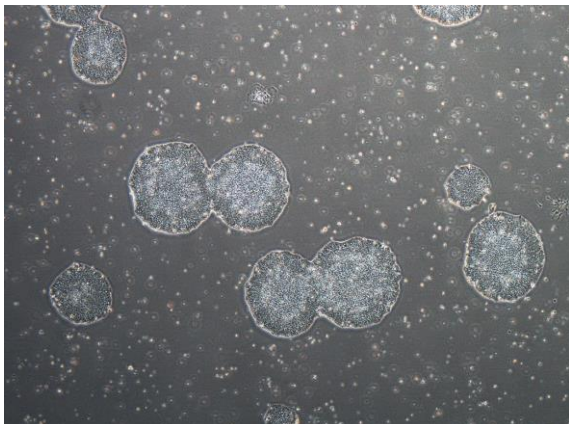
CiRA-j-1126-C: passage-3



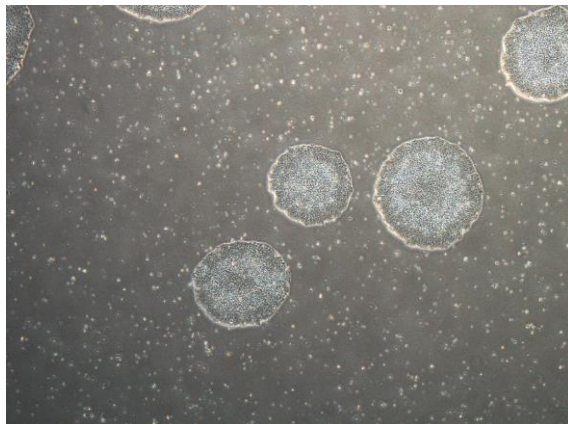
CiRA-j-1126-D: passage-3



CiRA-j-1126-E: passage-3



CiRA-j-1126-F: passage-3



( All images were captured at 4x magnification )